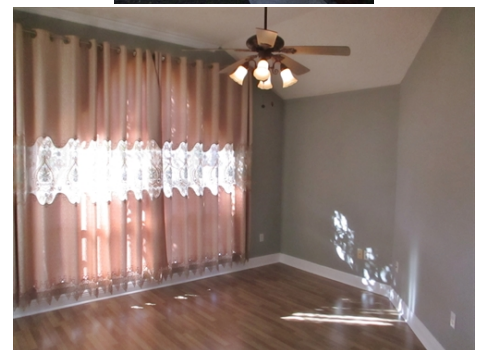


Flood Insurance Not Required



Large Pond Lot



165 West Lakeview Drive, LaPlace, LA 70068

WEB: 165WestLakeviewDrive.com

- » Beds: 3 | Baths: 2 Full
- » MLS #: 2186707
- » Single Family
- » Gas Range/Oven, Fireplace and Water Heater
- » Double Insulated Windows
- » Spacious 17 x 14 Master Bedroom
- » 2 Kitchen Pantries
- » Easy Access To I-10

QR Code



**CALL
Rich**

(985) 652-7653 (Office)

(504) 388-7653 (Cell)

remaxbest@yahoo.com

<http://richardlieberman.remax-louisiana.com>

**RE/MAX
BEST**

Re/Max Best
2925 Highway 51, Suite B
LaPlace, LA 70068
(985) 652-7653

Large Pond Lot*Wide Open And Spacious*High Ceilings*Crown Molding*Built-In Entertainment Center In Living Room*Kitchen Has Granite Counter Tops, Gas Range Oven, Lots of Cabinet Space And Two Pantries*Inside Laundry Room With Storage*Living Room Has A Gas Fireplace And Overlooks The Pond*Large Master Suite Has 17 x 14 Master Bedroom And Good Sized Bathroom With Linen Closet, Double Sink, Deep Garden Tub, Separate Shower and Walk Into Closet*Covered Patio Has Gas Stub Out For BBQ*Easy Access To I-10

